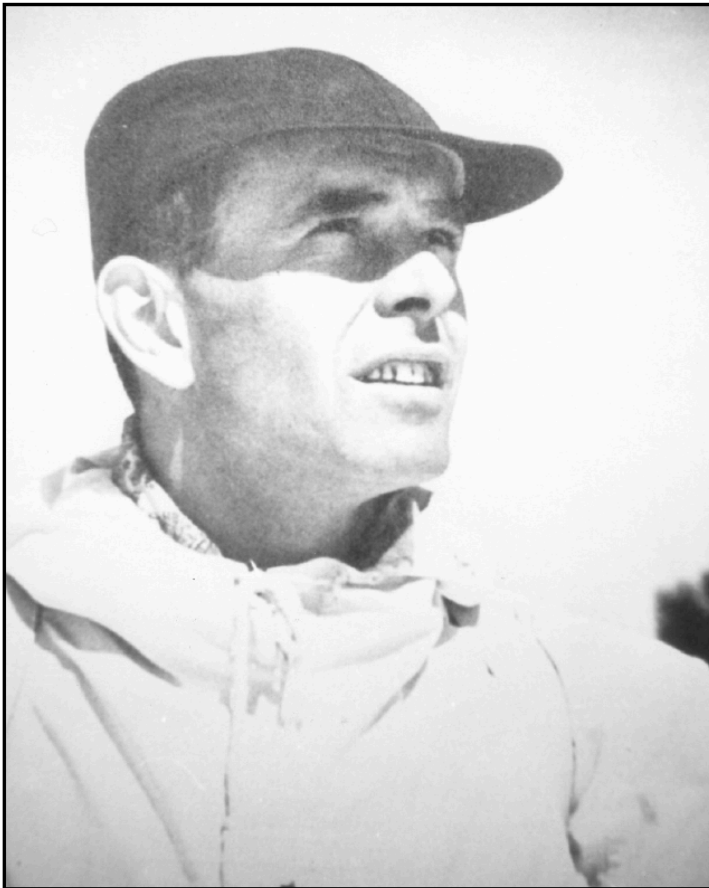


#97

## Cortlandt T. Hill

Born: 1906 Died: 1978



*Born in California, on March 31, 1906, Cortlandt T. Hill was recognized as a worker as well as a competitor in American skiing. He was a skisport builder in the California Ski Association and the National Ski Association.*

The name of Carty Hill stands out prominently among any listing of skisport builders who have contributed unstintingly of time and financing to the forward growth of organized competitive and recreational skiing throughout North America.

Hill's volunteer efforts are indelibly inscribed in the records of the National Ski Association of America and the California Ski Association, now respectively known as the United States Ski Association and the Far West Ski Association.

Carty Hill's initial ski venture of import came in 1937 when he organized and sponsored the first slalom race ever held on the so-called Eastern Slope of the High Sierra. This was at McGee Creek, close by Mammoth Mountain which then was still only known to ski-mountaineers.

Late in 1945, Carty was among the CSA leadership which met in Los Angeles and tabbed Mt.

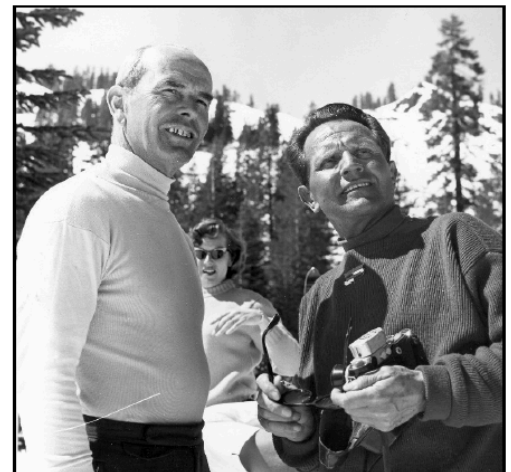
Rose in Nevada as the site for the division's 1946 alpine championships which set a high standard for the ski boom following World War II.

Elected FWSA president ahead of the 1947-48 ski season, Cory Hill almost single-handedly brought the United States Olympic Ski Team to St. Moritz in Switzerland for the Winter Games during which Gretchen Fraser won the first gold medal in skiing for America; he chaired the U.S. Olympic Ski Games Committee in 1952 at Oslo, Norway, where Andrea Mead Lawrence won two gold medals for the team; and in 1950 was general chairman of the American Team for the F.I.S. Alpine World Championships at Aspen, Colorado, the first ever held in the United States. Hill also represented the United States during several F.I.S. Congresses: 1951 in Venice, Italy; 1953 in Igls, Austria; 1955 in Montreux, Switzerland; and 1957 in Dubrovnik, Yugoslavia. Thanks to aerial and ski-trip surveys sponsored by Carty Hill the area developers of California, Nevada, and Oregon have had access to concise and expertly compiled snow and terrain reports.

In 1946, Carty, along with world-famous skimeisters Luggi Foeger and Hannes Schneider, financed surveys from which came reports on possible ski area developments ranging upward from San Gorgonio in Southern California to Mt. Bachelor in Oregon. This was in cooperation with the United States Forest Service, which sent along its expert James Gibson.

Carty Hill was cited by the Helms Athletic Foundation's Hall of Fame as "consistently and unselfishly a guiding light, a source of enthusiasm and support for American skiing for many years." He was also a Class "A" racer, his competitive career including entry in two Harriman Cups, the nationals of 1940, and two Silver Belts in California's Sugar Bowl.

Cortlandt T. Hill was elected to the U.S. National Ski Hall of Fame in 1970.



*Don E. Wolter Photo*